

# NQABARA

ECO RIVER LODGE  
— WILD COAST —



© Hennie Cilliers - africapi



[www.nqabara.co.za](http://www.nqabara.co.za)

*Escape to this Pristine Tranquil Haven...*

FEBRUARY 2026



# Welcome

## KICK BACK & UNWIND ON THE UNSPOILT BEACHES OF THE WILD COAST COASTLINE AT NQABARA LODGE

Located a mere 3 hours north of East London and 8 hours from Durban, Nqabara Eco River Lodge is a growing tourist attraction that overlooks the beautiful Nqabara River mouth. The lodge represents a long-held dream of the Nqabara Tourism Trust and Community.

Situated on the unspoilt Wild Coast near Dwesa, visitors to Nqabara can kick back and unwind on 10km of unspoilt beaches.

The more adventurous can run, cycle or fish on this pristine coastline with its adjacent indigenous forests. All travellers are welcome - from birders, fishermen and eco-travellers to family gatherings and small groups or conferences.

Swim in the clear Indian Ocean or in the pools of the Nqabara River as it flows through the mangrove trees. Take a boat up the winding river to the call of the fish eagles and enjoy unsurpassed bird watching. Fishing on the river or in the ocean is world-class.

Experience nature at it's best by visiting Nqabara Lodge...





# About Us

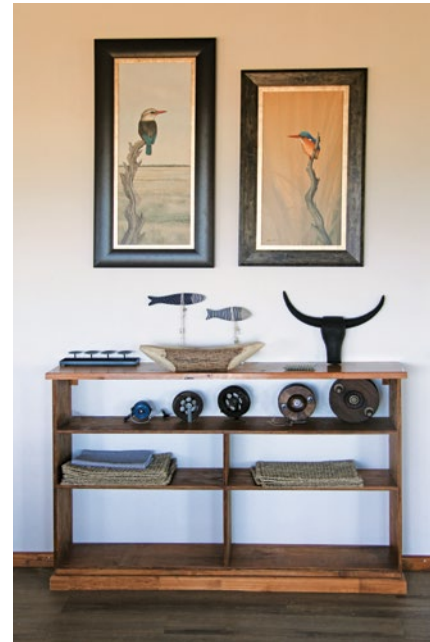
ESCAPE THE CROWDS & NOISE OF EVERYDAY LIFE  
TO THIS PRISTINE TRANQUIL HAVEN...

Located on the Wild Coast, 50km east of the town of Willowvale, Nqabara Eco River Lodge is a community owned facility, which is the result of a grant awarded to them by the SURUDEC, through the Eastern Cape Premier's Office by the European Union. The principal action of the grant is to establish a community-owned tourism lodge, which was to be sited on a remarkably beautiful promontory overlooking the confluence of the Nqabara and Nqabarana Rivers at their mouth, separated from the beach by 800 hectares of indigenous forest and grasslands with the Indian Ocean as a backdrop.

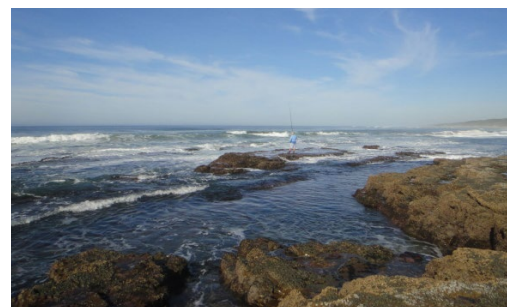
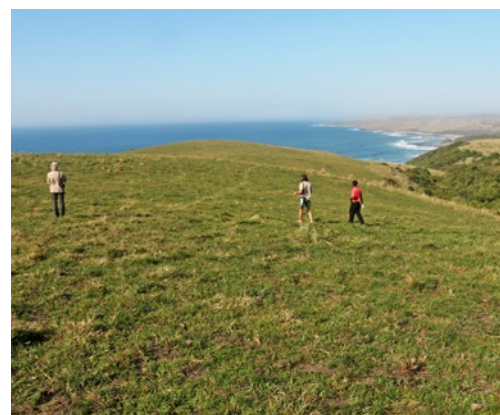
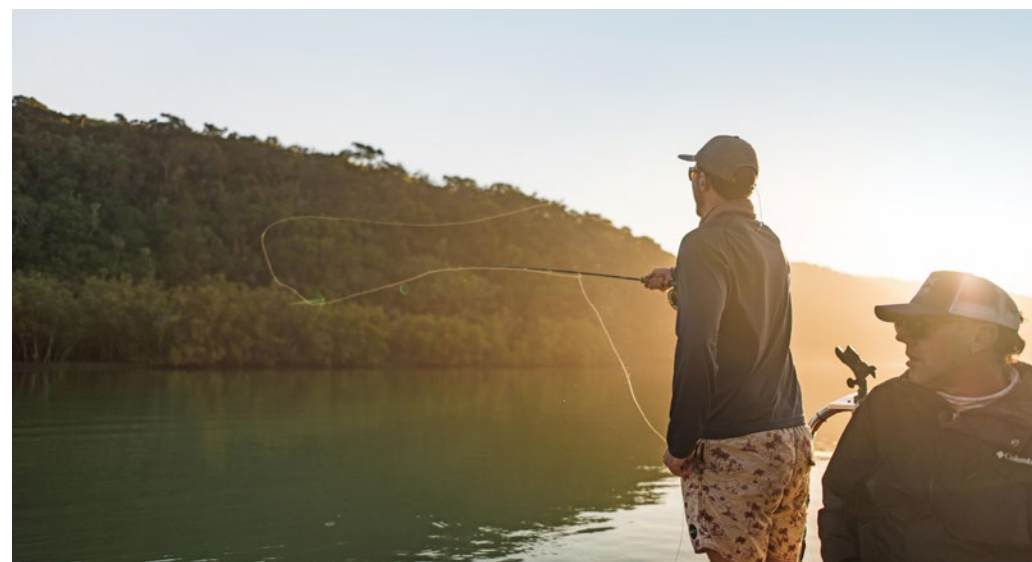
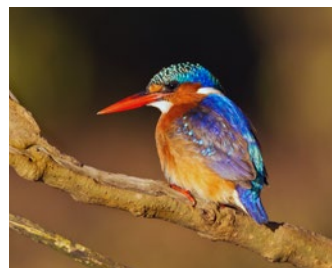
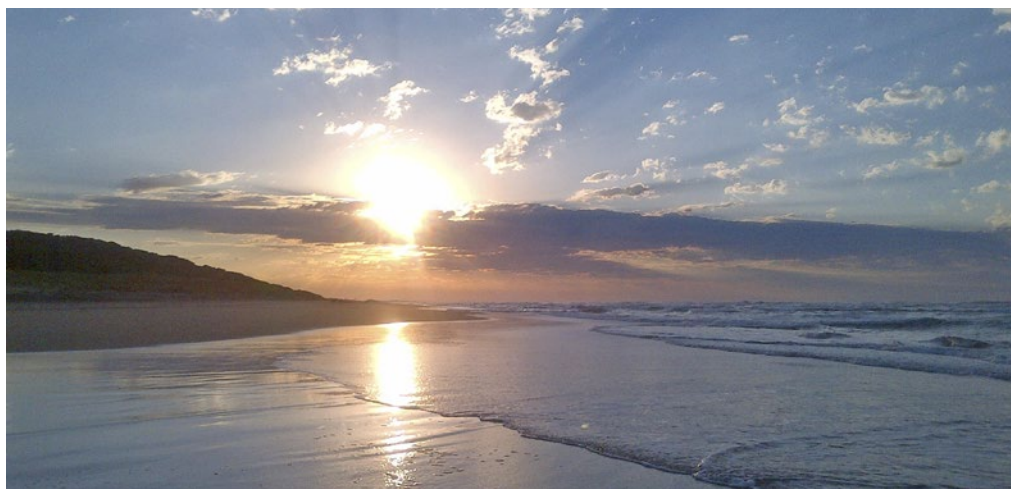
After 3 years of careful planning and building, the lodge has emerged from the grassland and is able to accommodate up to 22 guests at any time. Designed as a low-impact facility, Nqabara Eco River Lodge is fully off-the-grid. It harvests water from the heavens and innovative solar technology is used throughout the lodge to ensure that its footprint is as negligible as possible.

Nqabara Eco River Lodge has four fully equipped cottages. The Main Lodge accommodates up to 10 people in 3 bedrooms with a kitchen, lounge, dining area, large deck, braai area and DSTV. The three 2-bedroom cottages sleep four guests and are en-suite. They have an open plan kitchen, lounge-dining area with a deck and braai.

The Nqabara area is pristine, one of the few places along the Wild Coast that has not been developed. It is designated "environmentally sensitive" and the Nqabara community proudly treasure this status. The people of the area are determined to preserve the beauty and natural heritage that they know is their greatest asset.



NQABARA ECO RIVER LODGE





# Accommodation

## RESIDE IN ECO-COMFORT TO THE SOUNDS OF THE OCEAN

Nqabara can comfortably accommodate 22 people in three cottages and the main house.

### EACH COTTAGE (Kingfisher, Hornbill & Sunbird) FEATURES:

- Two furnished en-suite bedrooms with either two single beds, or two single beds and a king-size bed
- A lounge area
- A fully equipped kitchen
- Lounge & Dining Area
- Ablution Facilities
- Deck with magnificent views and braai facilities

### THE MAIN HOUSE (Fish Eagle) FEATURES:

- 1 x En-suite bedroom with king-size or twin beds
- 1 x Bedroom with king-size or twin beds
- 1 x large bedroom with six single beds and individual cupboards
- A fully equipped kitchen
- Lounge with DSTV (extra charge) and Dining Area
- Ablutions (2 toilets and an indoor and outdoor shower)
- Large Expansive Deck with magnificent views and braai facilities

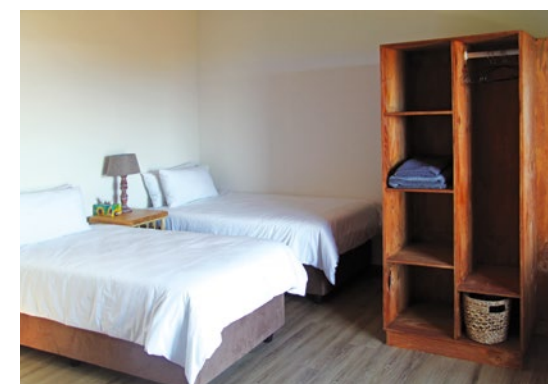
As a low-impact eco-lodge, the entire place is run on solar technology.

Water is harvested and stored in tanks.

Waste is collected and disposed of in the nearby town of Willowvale.

[DOWNLOAD CHALET INVENTORY](#)

[DOWNLOAD FISH EAGLE INVENTORY](#)





# Activities

## ENDLESS ACTIVITIES ON OFFER...

Both vast rivers offer endless activities with an extraordinary variety of bird-life. Rent a canoe, SUP or boat (5hp) and enjoy travelling down the river, totally at peace but for the sound of a Fish Eagle or Loerie. Spend the day angling or exploring the interesting flora on the river's edge.

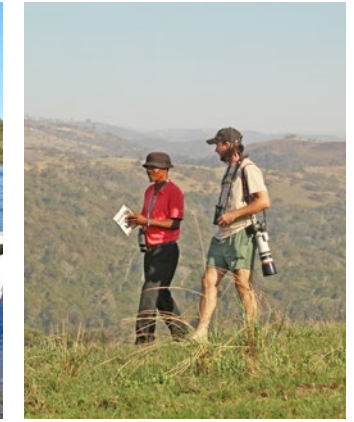
The shoreline here is exactly what has made the Wild Coast legendary; long white beaches edge the blue waters of the Indian Ocean as far as the eye can see. There is sea-edge life to explore as well; rock pools, extraordinary sea shells and fish in the shallow waters of every shape and size, with fishing being a major drawcard.

Dolphins can be seen all year round. Humpback and Southern Right Whales, migrating from the Antarctic, are seen daily between June and November. Orcas have also been spotted off the Wild Coast.

Enjoy a swim in "home pool" – natural "pool" formed by the estuary. Hiking north or south will reveal a variety of scenic splendour, perfect for budding photographers or amateurs alike. Nqabara Eco River Lodge is perfectly situated.

Central to The Haven Hotel & Kobb Inn make the Lodge the perfect halfway stop on spectacular longer hikes through the Dwesa Reserve. The walk from Kobb Inn is quite easy as it is flat, while the walk from the Haven includes a couple of hills/krantzies. Catering for hikers can be done (booking in advance). If you are keen on something shorter and local you can enjoy a guided walking trail and learn about the myriad of birds in the area.

Nqabara has SUPs, double & single canoes and a 5hp boat for hire. Guided trails with a qualified ranger can be arranged. If exploring on bicycle, you can cycle for miles in any direction, over whatever terrain takes your fancy. If culture and history are your interest, the area is full of willing storytellers.





# Dwesa-Cwebe Nature Reserve

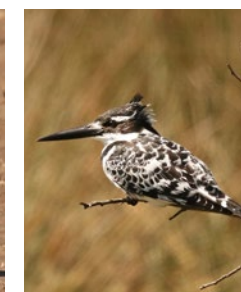
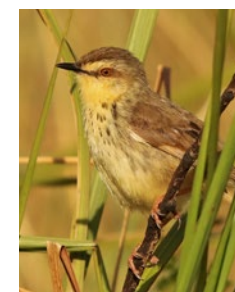
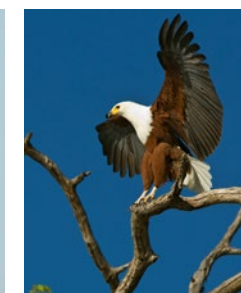
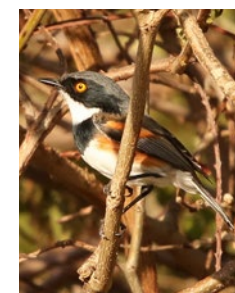
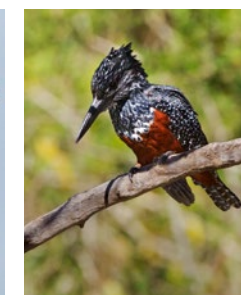
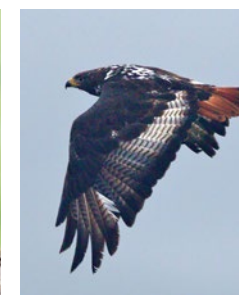
## Eastern Cape Birding Route

The Dwesa & Cwebe Nature Reserves flank either side of the Mbashe River and together, provide protection to 6 050ha of vast lowland coastal forest, moist coastal grassland patches, mangroves and 20 km's of pristine coastline, with a phenomenal variety of birdlife to list just a few...

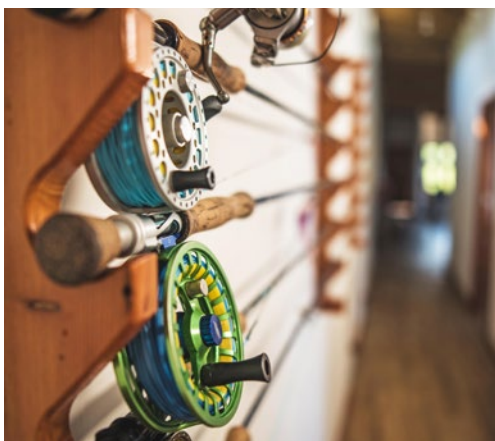
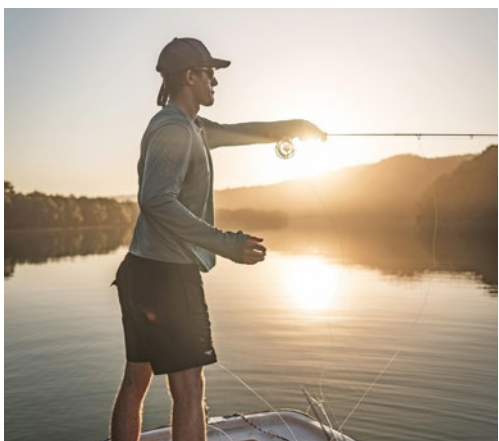
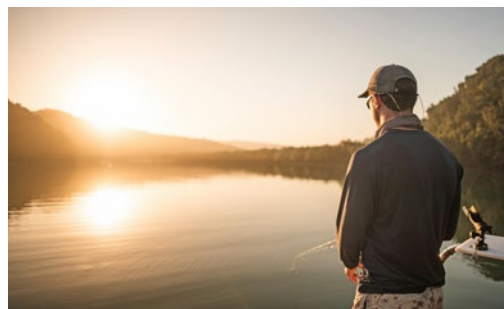
Spotted ground-thrush	African black oystercatcher	Knysna woodpecker
Mangrove kingfisher	African emerald cuckoo	Black cuckoo
Trumpeter hornbill	Narina trogon	Knysna turaco
Chorister robin-chat	Grey cuckooshrike	White-starred robin
Brown scrub-robin	Blue-mantled crested-flycatcher	Olive bush-shrike
Swee waxbill	Forest canary	Mountain wagtail
Half-collared kingfisher	African crowned eagle	African wood-owl
Barratt's warbler	Forest canary	Southern tchagra
Olive & Grey sunbird	Red-backed mannikin	Croaking cisticola
Grey-crowned crane	Swamp nightjar	Denham's bustard
Southern ground-hornbill	Plain-backed pipit	Wailing cisticola
Broad-tailed warbler	Yellow-throated longclaw	

### DOWNLOAD BIRDLIST

Mammals in the reserve include: Eland, Blue wildebeest, Red hartebeest, Warthog, Cape clawless otter and Cape buffalo.



# NOABARA ECO RIVER LODGE



*Escape to this Pristine Tranquil Haven...*



## *Fishing - the Rivers*



There are not many angling sites where one can enjoy exciting angling in two rivers when the sea is unfishable. The Nqabara and Nqabarana Rivers join at the mouth below the Lodge and are amazing clean rivers, teeming with prolific birdlife and providing good fishing all year. The Nqabarana is a smaller river and is best navigated by canoe, which can be rented from the Lodge, you are welcome to bring your own. Lure and light bait angling amongst the mangroves and deeper channels will result in catches of Perch, Grunter, Kob, Garrick and small Kingies. The river is calm and both young and older family members will have great fun exploring it by canoe.

The Nqabara river is much larger and navigable by small estuary boat or canoe, or it can be fished from the banks. One can navigate for a long way upstream and many species are accessible by lures and baits, with Garrick and Kob being first prize. Also included amongst catches are the hard fighting Rock Salmon, Perch, Kingfish and Grunter, while Springer occur higher up.

NOABARA ECO RIVER LODGE



*Escape to this Pristine Tranquil Haven...*

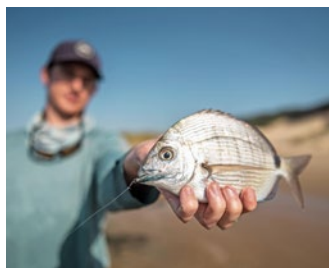


## *Fishing - the Sea*



During neap tides walk across a sand bank on the river to access the beach on the right hand side of the Lodge. If however, you want to fish during a Spring High Tide then a canoe is best used to cross the river. From the beach one will catch plenty of Rays, Sand Sharks, or target Kob on the drop-offs with McCarthy Paddle-tails, or elusive Pig-nose Grunter during winter months. Sunrise Rocks, 200 meters to the right of the mouth, produces Silvers, Bluefish and Kob. In order to fish to the left of the Nqabara River, one would canoe across and either fish the mouth on an incoming tide or the many gullies that stretch for kilometres on the East Bank.

Please remember that we practice Catch and Release and only fish that are to be consumed at the Lodge can be kept. Kindly also follow the Parks Rules and Regulations as you do need a Fishing License.





*At A Glance*

## SELF CATERING ECO LODGE WITH SPECTACULAR VIEWS

- SERVICED DAILY
- FULLY EQUIPPED KITCHENS
- ALL LINEN (EXCEPT BEACH TOWELS)
- FRESH BREAD AVAILABLE TO ORDER

## CHECK-IN & CHECK-OUT

Check-in time : 2pm. Checkout time : 10am.

## COMMUNITY LEVY

A community levy of R 200 per vehicle is charged on invoice.

## INDEMNITY

Please note that all guests will need to sign an Indemnity on arrival at the Lodge.

**DOWNLOAD INDEMNITY HERE.**

## FIRES & FIREWOOD

Sustainable Acacia firewood is available for purchase (see rates).

Please bring fire lighters with you.

**Please do not leave braai unattended, this is a RED fire zone. NO BONFIRES AROUND THE LODGE. Please be very careful!**

## FOR SALE

We stock the following items for sale: Nqabara Fleece, Caps, Hats, Buffs, Fishing Shirts and Fresh Bread (must pre-order).

**GRATUITIES** Always appreciated by staff.

**HOUSEKEEPING** Rooms serviced daily.

## MANAGEMENT & STAFF

Management and staff are available at all times during the day to assist guests and make your stay more pleasurable. Should you have a night time emergency please call:

MATT (Manager) – 083 800 7200

CAPTAIN (Manager) – 073 870 3032

LUNGA (Camp Manager) – 079 991 3235

## NANNIES & BABYSITTERS

Should you require the services of a Nanny please contact: MATT – 083 800 7200

**SECURITY** We have a security guard on the property from 6pm to 6am.

**SHOPS** The nearest shop is the Ncesa Village – they only stock very basic goods. In Willovale (±1 hour away), there is a larger selection of shops.

**SMOKING** Please only smoke on the lodge decks. Due to fire hazards **DO NOT** throw stompies into the grasslands, please bin them.

## SOCIAL RESPONSIBILITY

Nqabara assist the following:

Ngwane Day Care Centre (1 - 5 yrs)

Junior Soccer Academy (6 -12), Men's Soccer  
Any suitable clothing/kit, toys etc. would be greatly appreciated.

**TOILETS** We are on a septic tank system.

**PLEASE DO NOT THROW FOREIGN OBJECTS INTO THE TOILET, ONLY TOILET PAPER.**

**VALUABLES** Guests are advised to please lock ALL valuables in their vehicles. The Lodge will not be held responsible for missing or lost items.

## WATER & ELECTRICITY

**PLEASE CONSERVE WATER & ELECTRICITY!**

Our lodge is Eco-friendly and we are 100% off the grid. We generate solar electricity and all our water is collected in rain water tanks which is then treated for drinking.

**PLEASE NOTE THE FOLLOWING:**

Only the water from the smaller filtration taps is suitable for drinking. We suggest you bring drinking water.

In order to conserve our rain water, please take short showers.

Sunbird Lodge: Shower before 8pm as it operates off a solar geyser.

Please turn off all lights when they are not in use.

Please take all empty glass bottles back with you on departure.

**PLEASE DO NOT plug anything with a heat element into the solar system eg. hair dryer/ kettle, as this will cause the inverter to blow.**

## ACTIVITIES

**BOARDGAMES** A variety of books, children's games & board games are available.

**FISHING** Please follow restrictions and make sure you have a fishing license. **NO FISH MAY LEAVE THE RESERVE.** Only fish that will be eaten at the lodge may be kept. Please record all your catches in the book. Our resident fishing guide is available for hire. Basic fishing equipment is available for hire. A river boat is

available for charter – see rates.

**NOTE: ALL Steenbras (Pignose, Silver & Black) to be released.**

## CANOES & SUPS

Canoes and SUPs are available for hire (see rates). Life jackets are supplied. At your own risk. Please ensure canoes & SUPs are secured above the high water line when not in use. Should the canoe or SUP be washed away, you will be liable for replacement.

## WHALE & DOLPHIN WATCHING

Dolphins can be seen all year round. Humpback and Southern Right Whales, migrating from the Antarctic, are seen daily between June and November. Orcas have also been spotted off the Wild Coast.

## BIRDWATCHING

Due to the unique Wild Coast environment, a phenomenal variety of bird life can be seen, with over 290 birds recorded in the area. Please refer to the bird list.

Birding & Nature trips to Dweza can be arranged with: Vuyanie 065 929 6646.

Clivia Nature Walk in the Nqabara Forests with LUNGA (Camp Manager) – 079 991 3235.

## WHAT TO BRING

- Self Catering
- Fire lighters
- Tick Repellent
- Binoculars
- Drinking Water
- Beach Towels
- Sunblock
- Fishing Equipment





## Rates & Directions

### 2026 ACCOMMODATION RATES [PER PERSON PER NIGHT, SHARING]

2 BEDROOM COTTAGES – Kingfisher, Hornbill & Sunbird			MAIN LODGE – Fish Eagle		
SEASON	MINIMUM	ADULTS	SEASON	MINIMUM	ADULTS
Out of Season	2 nights	R 600	Out of Season	6 pax / 2 nights	R 650
High Season	2 pax / 2 nights	R 700	High Season	6 pax / 4 nights	R 750
Christmas	2 pax / 6 nights	R 750	Christmas	6 pax / 6 nights	R 800
CHILDREN	< 2: Free 2–10: 50% of rate		CHILDREN	< 2: Free / 2–10: 50% of rate	
Cleaning & Consumables Fee		R 300 per stay	Cleaning & Consumables Fee		R 500 per stay

HIGH SEASON : SCHOOL & PUBLIC HOLIDAYS

If you would like to make a booking to spend some time at our beautiful holiday venue, please click the following link to check availability and make a booking [ONLINE BOOKINGS](#)

### SERVICES & ACTIVITIES

Braai Wood – 1 x large bag	R 80	River Ferry Per Person – per trip	R 50
Extra Gas Fridge/Freezer – per day	R 50	Rod Rental including Tackle	River Rod – per day R 100 Sea Rod – per day R 200 Fly Fishing Rod – per day R 300
Clothes Washing – per load	R 250	Qualified Fishing Guide	R 750
Freshly Baked Bread – cost per loaf	R 30	Local Fishing Guide	R 250
DSTV – Fish Eagle Lodge Only – Daily Fee	R 40	Guided River Boat Fishing	Half Day R 3000 Full Day R 4000
Guided Forest Walk	R 200	Mullet River Boat Per Day – 5hp	R 1250
Canoes Per Day – single	R 200		
Canoes Per Day – double	R 300		
Canoe Trip – Guide Fee	R 300		
SUP – per day	R 300		

**DIRECTIONS** [DOWNLOAD DIRECTIONS](#)

**CONTACT** For enquires and bookings please contact:

Tim Hammond – 082 320 9320 | [tim@nqabara.co.za](mailto:tim@nqabara.co.za)

